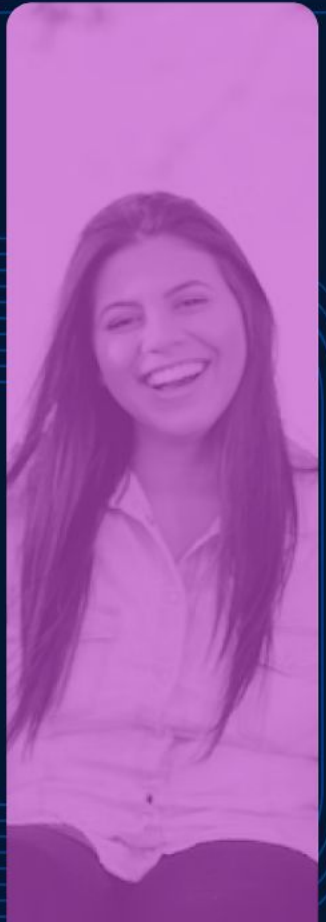


The Workforce Evidence-Based Spending Guide

EXECUTIVE SUMMARY

 **RESULTS**

FOR AMERICA



Why Evidence-Based Spending?

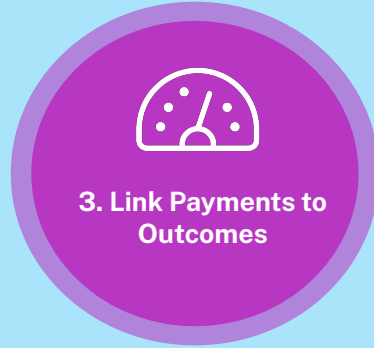
State and local government workforce agencies **invest hundreds of millions** of dollars each year through grant programs.

Our nation's workforce system therefore has a huge opportunity to create **higher quality, more sustainable and equitable jobs by investing in evidence-based interventions** that advance economic mobility outcomes.

Results for America's [Workforce Evidence-Based Spending Guide](#) helps state and local government workforce leaders:

1. **Define and prioritize evidence** and outcomes in their grants and contracts to improve the effectiveness of their investments;
2. **Target funding** toward interventions that work; and
3. **Improve economic mobility** outcomes for program participants.

Five Evidence-Based Spending Strategies



→ Define 1

To make procurement and grant-making more evidence-based, workforce agencies need a **specific evidence framework**, with corresponding equity considerations, that fits their unique context.

→ Prioritize 2

Prioritizing evidence can **ensure the effectiveness of interventions**, improve equity by addressing disparities across populations, and enhance accountability and transparency in the allocation of resources.

→ Link 3

Performance-based grants and contracts can achieve **better and more equitable outcomes** by linking payments to whether a provider delivers on priority outputs and outcomes.

→ Manage 4

Treating **contracts and grants as partnerships**, instead of compliance documents, can transform workforce programming, improve service delivery, and create bi-directional accountability for stewardship of funding and impacts.

→ Build 5

Workforce agencies can evaluate service delivery models, learn which strategies are effective for their communities, and leverage that knowledge to **improve programs and shape future funding opportunities**.

Components of Five Strategy Pages



Overview: Description of how each strategy fits into the procurement process and how it might benefit your work.



Government Examples: Summaries of how local, state, and federal government workforce agencies have developed/implemented each strategy.



Embedding Equity: Information on how each strategy can help promote equity.



Getting Started: Step-by-step guide on how to develop and implement each strategy.

Additional Resources in the Guide



Over 40 [specific examples](#) of how local, state and federal government workforce have implemented our five recommended strategies practices.



RFA will continue to add examples to our guide from government agencies across the country. We encourage you to [submit your examples](#) for consideration.



[Templates](#) to help agencies strengthen their procurement documents as quickly and effectively as possible and [information](#) about evidence-based clearinghouses and well-respected organizations.

How To Use The Guide

Strategies: Develop and implement the [five strategies](#) in this guide to strengthen the impact of your investments

Leading Examples: Explore our [list of government agencies](#) who are already putting the strategies into action.

Resources: Review all the [latest information](#) on evidence-based clearinghouses from well-respected organizations.

VISIT THE GUIDE

WALKTHROUGH
VIDEO

NEWSLETTER
SIGN-UP

JOIN OUR
FELLOWSHIP